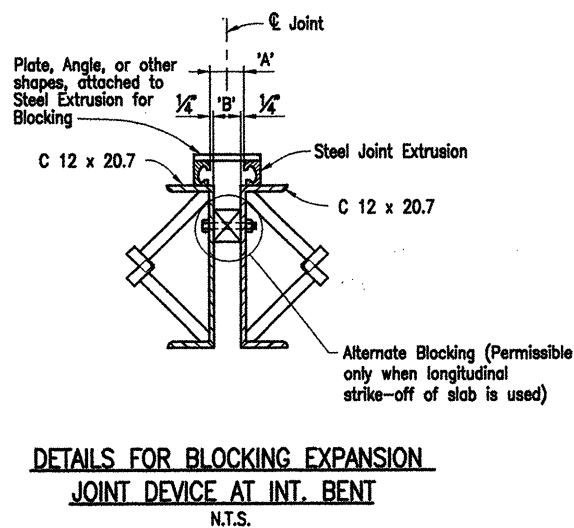
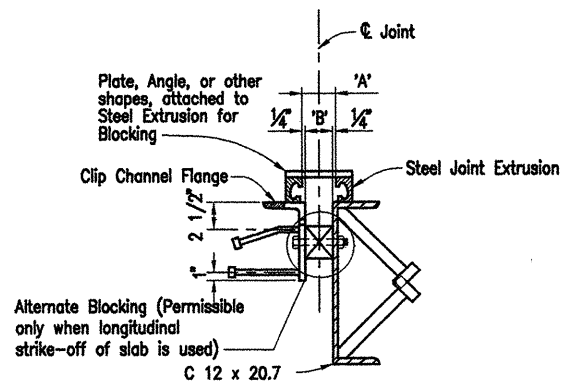
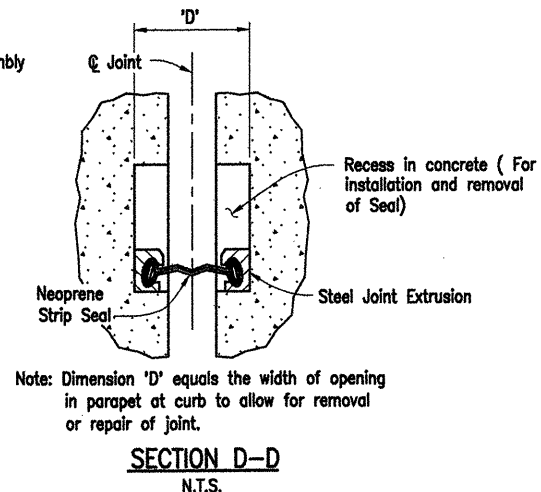
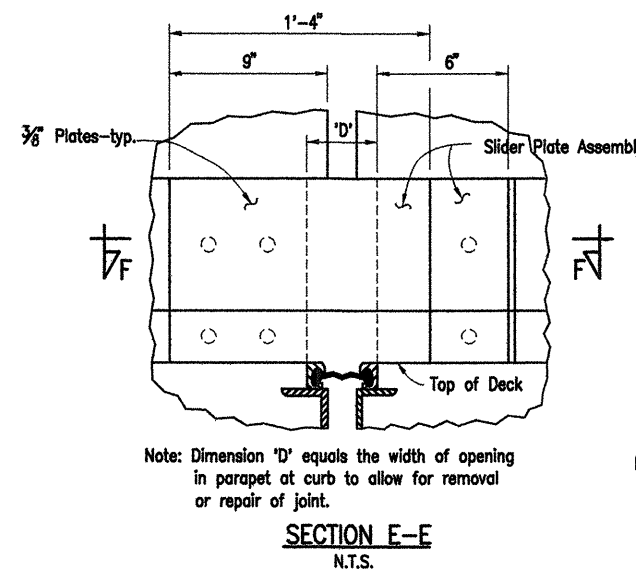
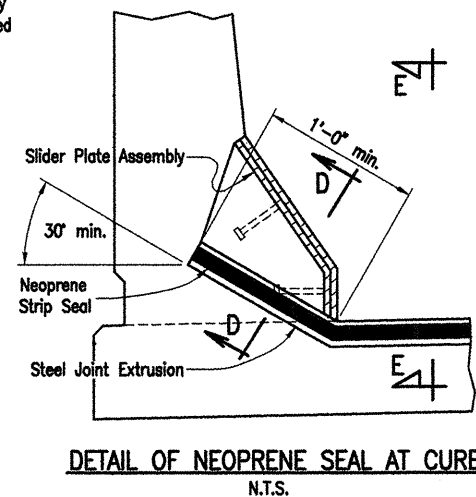
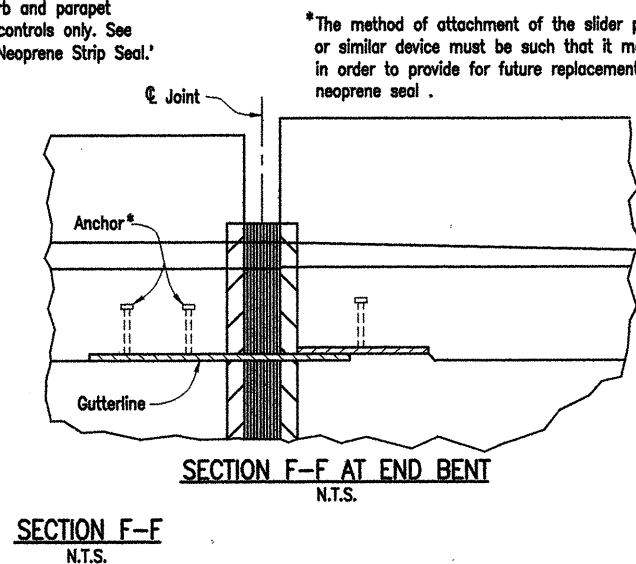
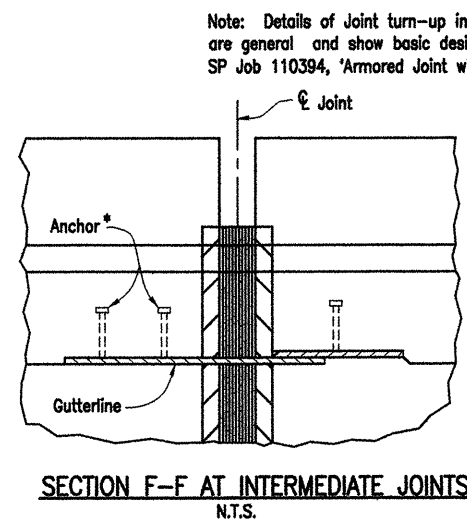
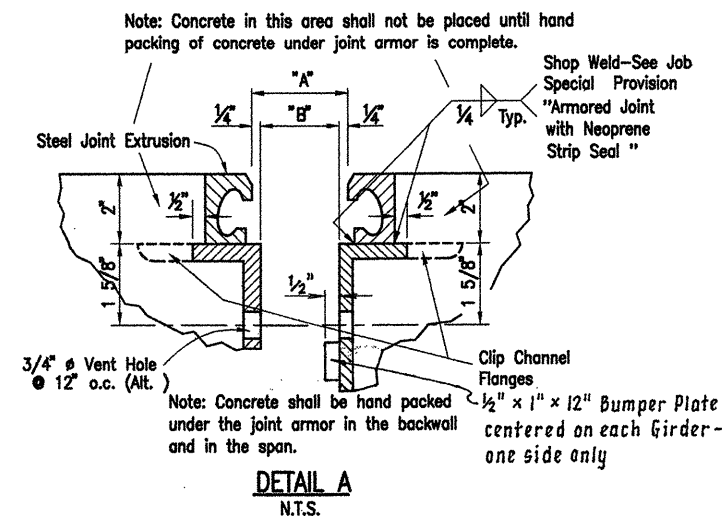
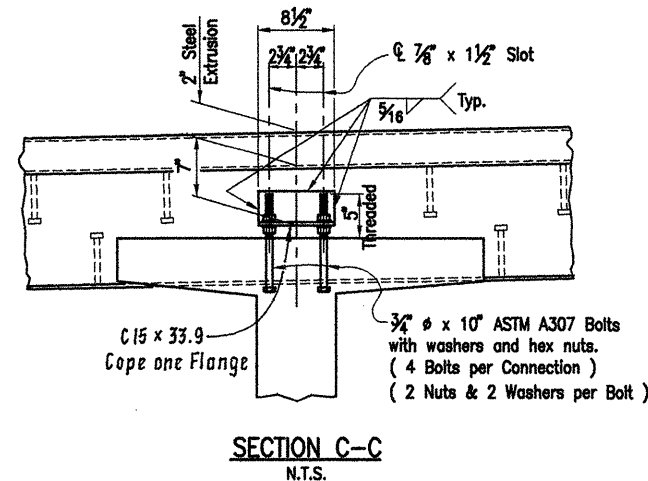
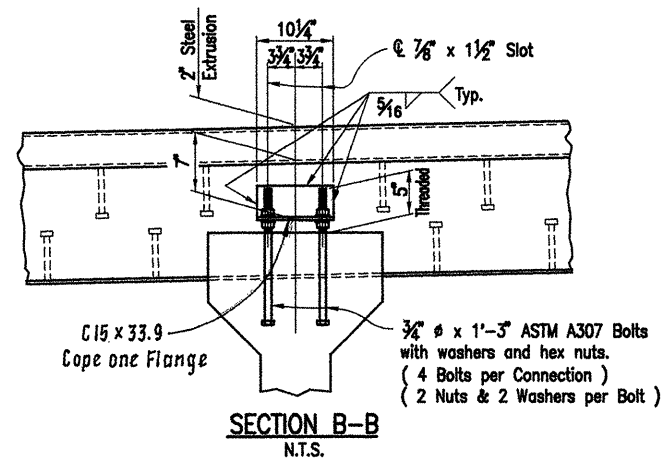


COMPANY 1999 JOBS 99-044 AHTD\WHITERIVER\JOB 110394\expjoint2a1t1 ACAD SCALE: 3/4" = 1'-0"

DATE REVISED	DATE FILMED	DATE REVISED	DATE FILMED	FED. ROAD NO.	STATE	FED. AID PROJ. NO.	SHEET NO.	TOTAL SHEETS
					ARK.			
				JOB NO.		110394	97	196
				06830		EXP. JOINT		42009



White River Bridge Bent No.	"A" Width Perpendicular to Jt. @ 24 Hr. Avg. Temp. ** of:				"B" Width Perpendicular to Joint at 24 Hr. Avg. Temp.** of:				"C" Width Perpendicular to Joint at 24 Hr. Avg. Temp. of 60° F.	
	"A min." 120° F.	80° F.	60° F.	40° F.	"A max." 0° F.	80° F.	60° F.	40° F.		
97	2 3/16"	2 3/4"	3"	3 1/4"	3 13/16"	2 1/4"	2 1/2"	2 3/4"	6"	
86, 89 93	1 7/16"	2 1/2"	3"	3 1/2"	4 9/16"	2"	2 1/2"	3"	6"	

Note: For Locations of Sections B-B and C-C, See Dwg. Nos. 42008
For Locations of Details A, See Dwg. Nos. 42008

ALTERNATE NO. 1 WHITE RIVER BRIDGE

DETAILS OF EXPANSION JOINTS (SHEET 2 OF 4)

WHITE RIVER STR. & APPRS.
(CLARENDON) (PH. II) (F)
MONROE COUNTY

ROUTE 79 SEC. 13

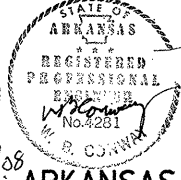
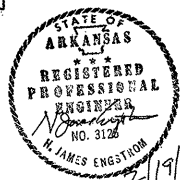
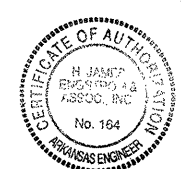
ARKANSAS STATE HIGHWAY COMMISSION

LITTLE ROCK, ARK.

Engstrom/Modjeski and Masters, Inc.

DRAWN BY: PMR DATE: Nov. 07 FILENAME: b1103941_e2
CHECKED BY: GPT DATE: Nov. 01 SCALE: 3/4" = 1'-0"
DESIGNED BY: YO DATE: Nov. 01

BRIDGE NO. 06830 DRAWING NO. 42009



BRIDGE ENGINEER